



STRIVE TO BE THE BEST

- DRILLMASTER MOTTO



Hunan Drillmaster Engineering Technology Co., Ltd

Headquarters: Depu.Wuhe Enterprise Zone, Changsha, China

Factory Add: Haiyang Industrial Zone, Tangxia, Ruian, China

Guanling Industrial Zone, Fuding, Fujian, China

Tel: 86-731-84030163

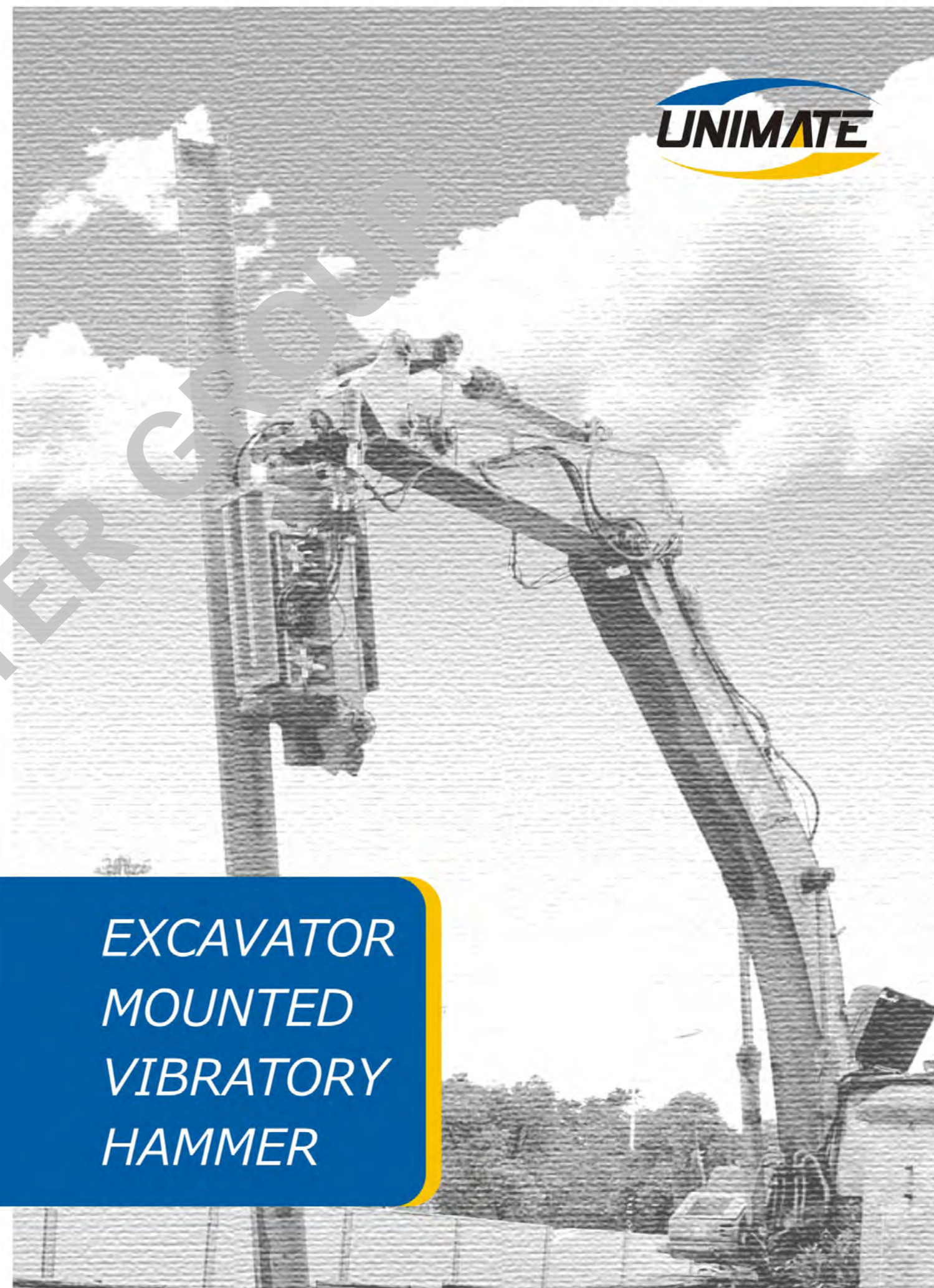
E-mail: info@drillmastergroup.com

www.drillmastergroup.com



www.drillmastergroup.com

**EXCAVATOR
MOUNTED
VIBRATORY
HAMMER**



Smart adapter, with tilt function, easy for picking up setting the piles



Side grip

Easy changeable jaws, depends on the working condition

Gear box

Main Clamp

Elastomer

Jaws

SIDE GRIP VIBRO

Model	UMS 55	UMS 65	UMS 75
Eccentric Moment(kgm)	5.5	6.5	7.5
Centrifugal Force(KN)	320	378	436
Max Centrifugal Force(KN)	545	643	742
Frequency(rpm)	2300-3000	2300-3000	2300-3000
Side Clamp Force(Kn)	380	460	520
Bottom Clamp Force(Kn)	416	456	496
Size(L*W*H)(mm)	1109*1124*2470	1122*1129*2510	1122*1129*2510
Throat Width(mm)	870	920	920
Weight(kg)	2555	2655	2755
Rotate/Tilt angle(°)	360/±40	360/±40	360/±40
Excavator Class(T)	20-30	30-40	40-50
Engine Power min(KW)	110	150	180
Pressure Setting(bar)	320	320	320
Return Pressure max(bar)	5	5	5
Pile Length(m)	6-12	6-15	6-18

AVAILABLE SHEET PILE LENGTH

Model	6m	9m	12m	15m	18m
UMS 55	[Progressive bar chart showing max lengths for UMS 55]				
UMS 65	[Progressive bar chart showing max lengths for UMS 65]				
UMS 75	[Progressive bar chart showing max lengths for UMS 75]				

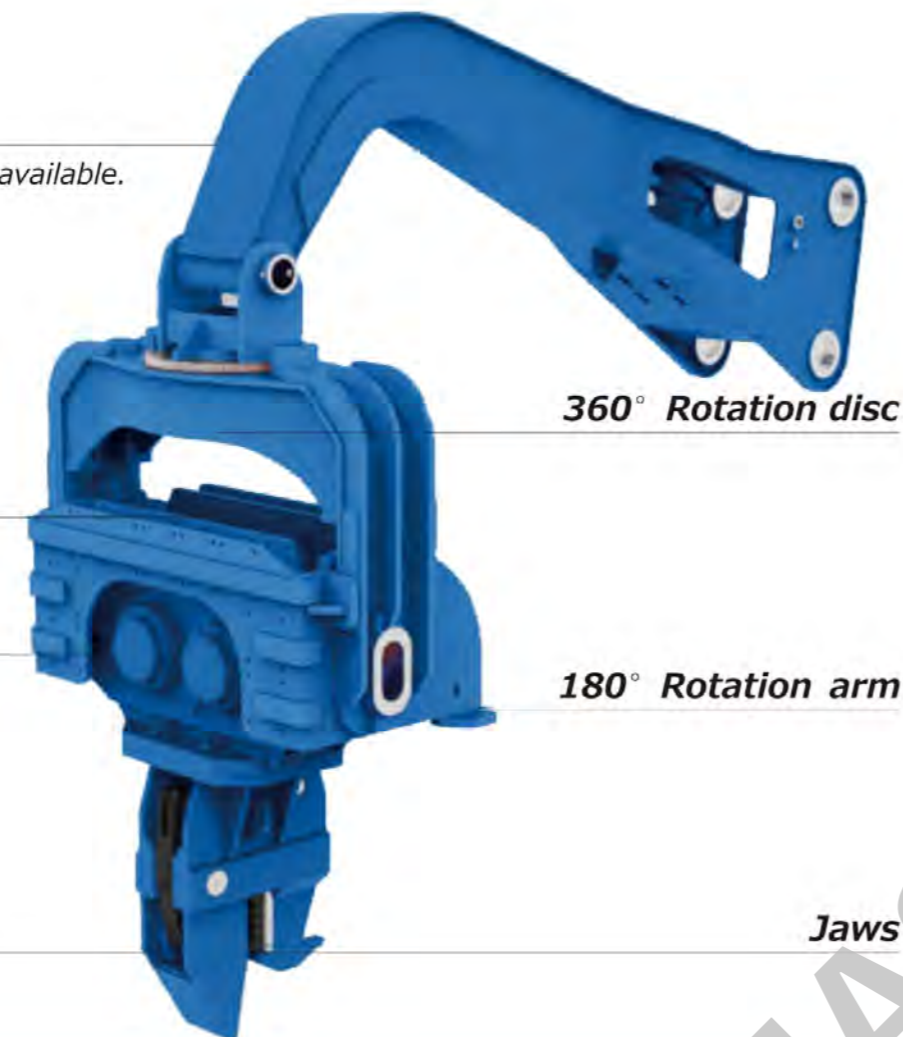
The max pile length, when the soil is very soft.
 The max pile length, in common soil condition.



STRIVE TO BE THE BEST

Vice arm

Customized design is available.



360° Rotation disc

Elastomer

Gear box

180° Rotation arm

Main Clamp

Jaws

EXCAVATOR MOUNTED VIBRO

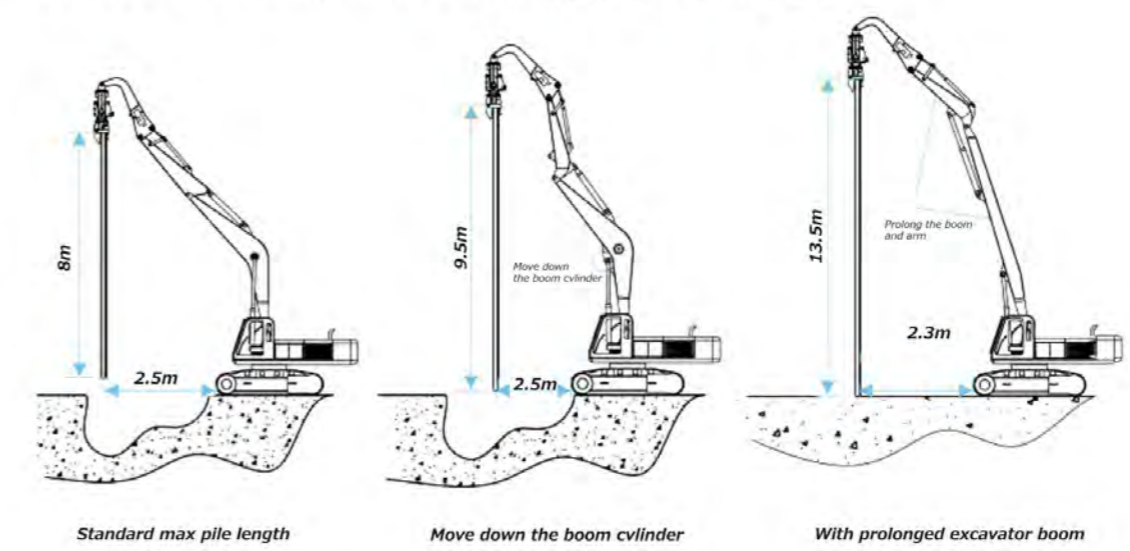
Data/Model	V-150	V-250	V-300	V-350	V-400	V-450	V-500
Eccentric Moment(kgm)	2.5	4.26	5.3	5.8	6	6.5	7
Frequency(HZ/rpm)	43/2800	43/2800	43/2800	43/2800	43/2800	43/2800	43/2800
Centrifugal Force(KN)	172	298	370	435	525	570	610
Hydraulic system operation pressure(bar)	300	300	300	315	315	315	315
Hydraulic system oil flow(lpm)	150	165	210	235	280	280	280
Weight (kg) (Vibrator+clamp)	1100+280	1700+588	1745+588	2010+680	2020+680	2050+680	2100+680
Excavator Weight (kg)	12-17	20-25	25-30	30-35	35-40	40-45	45-50
Size (mm) measure with C15 clamp	1850*1050*1100	1530*1360*1540			1700*1600*1600		
Vice arm Model/ Size/Weight	A150/ 1900*600*970/ 530kg	A200/2400* 600*970/710kg		A250	2870*680*970/890kg		



AVAILABLE SHEET PILE LENGTH

Model	Max pile length(Use any excavator as example)	6	7	8	9	10	11	12	13	14	15	18
V-250	Standard max pile length											
	With revised excavator boom											
V-300	Standard max pile length											
	With revised excavator boom											
	With prolonged excavator boom											
V-350/ V-400	Standard max pile length											
	With revised excavator boom											
V-450	Standard max pile length											
	With revised excavator boom											
	With prolonged excavator boom											
V-500	Standard max pile length											
	With prolonged excavator boom											

Excavator modification drawing(V-350 for eg.)



STRIVE TO BE THE BEST



UMS
Piling clamp positioning



V-300
Sheet piling with an excavator long reach boom



V-250
Pile piling with custom-made clamps



V-400
Casing driving

UMS
Pile excavating



UMS
Piling with side grip



STRIVE TO BE THE BEST