



STRIVE TO BE THE BEST



Drillmaster Engineering Technology Co.,Ltd

Headquarters: Depu.Wuhe Enterprise Zone, Changsha, China

Unimate Factory: The East of Town Government, Diaowo Town,
Zhuzhou City, Hebei Province.

Tel: 86-731-84030163

E-mail: info@drillmastergroup.com

www.drillmastergroup.com



www.drillmastergroup.com



UNIDRILL®

*A Brand of
Drillmaster Group*

Kelly Bar

www.drillmastergroup.com

Since 2009



Kelly bar, just Unidrill!

Drillmaster Engineering Technology Co., Ltd is a leading solution provider for foundation engineering since 2009. Unidrill Technology Co.,Ltd as its subsidiary company is responsible for manufacturing kelly bars, drilling tools and desanders.

With decades of years experience in the R&D, fabrication & sales of wear parts, drilling tools and equipment. We are committed to producing high-quality kelly bars, and have registered our own kelly bar brand "Unidrill".

*Since 2009, "Unidrill" kelly bar has become the first option for **Bauer, Liebherr and Soilmec** rig users with very good reputation because of its high quality, heavy duty, durability, excellent performance, and long life service. Also for other brands such as Mait, Casagrande, IMT, Sany, XCMG, Sunward, JINT etc. We have serviced more than 300 piling companies for over 60 countries.*

We customize your friction or interlocking kelly bars, diameters range from 355mm to 930mm, 3 elements to 6 elements, the biggest diameter 930mm kelly bar is from "Unidrill"!

Kelly bar, just Unidrill!



Model: **OD630**-6×26.5M/Friction
Max Drilling Depth **148m**



Model: **OD720**-5×28M/Interlocking
Max Drilling Depth **130m**



OD930

Model: **OD930**-5×25m/Interlocking
Max Drilling Depth: **115m**

**The biggest Kelly bar
in the world !**



RECORD creation
930
720
630

01

Top Quality Material

Top quality material from the top steel manufacturer with high yield strength, wear-resistant and longer using life.



03

Experienced R & D and Manufacturing Team

Specialized in manufacturing high quality kelly bar, over 10 years experience technician and welders in kelly bar R&D, design and manufacturing



02

Strict Quality Control

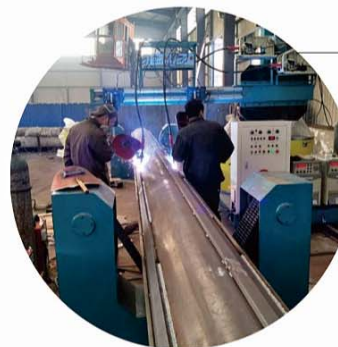
THREE steps alignment to check the roundness and straightness before and after welding, to prevent the deformation during heat treatment.



04

Most Advanced Production & Manufacturing Process

The key components are made of imported steel, special heat treatments and surface painting treatments, better performance in large torque, large diameter, super deep socked drilling.



ADVANTAGE

Unidrill Kelly Bar for Bauer Rigs



BG28 419-4×14m



BG38 470-4×17m



BG55 559-3×24m



LB28 419-4×17m



LB44 559-5×23m



LB36 470-4×13m

Unidrill Kelly Bar for Liebherr Rigs

Unidrill Kelly Bar for Soilmec Rigs



SR45 355-4×10.4m



SR65/75 406-4×14m



SR95 482-4×17.5m

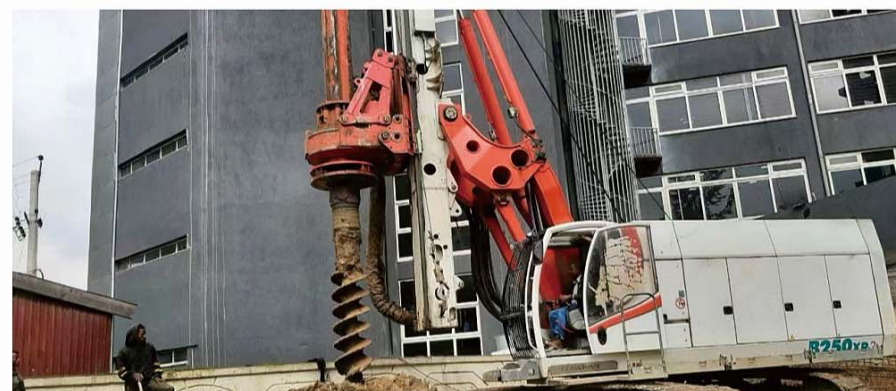
Unidrill Kelly Bar for Mait/Casagrande/IMT Rigs



MAIT HR180 377-4×14m



IMT AF240 406-4×14.5m



Casagrande B250 419-3×9.5m

PRODUCT

Unidrill Kelly Bar for SANY/XCMG/Jintai/Sunward Rigs



SANY SR360 508-5×17.5m



XCMG XCMG400E 530-4×18m



Jintai SD30W 406-4×9m



Sunward SWDM 360H 580-5×17.5m

PRODUCT

Basic Production Process



Interlocking/Friction Kelly Bar Dimension in Operation

S Rotary head lift stroke

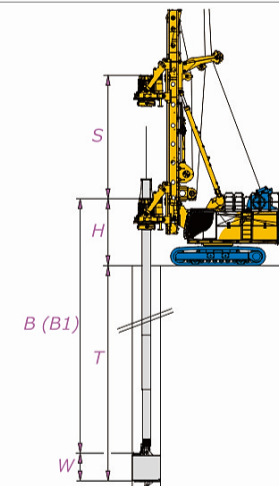
H The distance from top end of rotary head to the ground when it is at the lowest position.

B The extended length when drilling

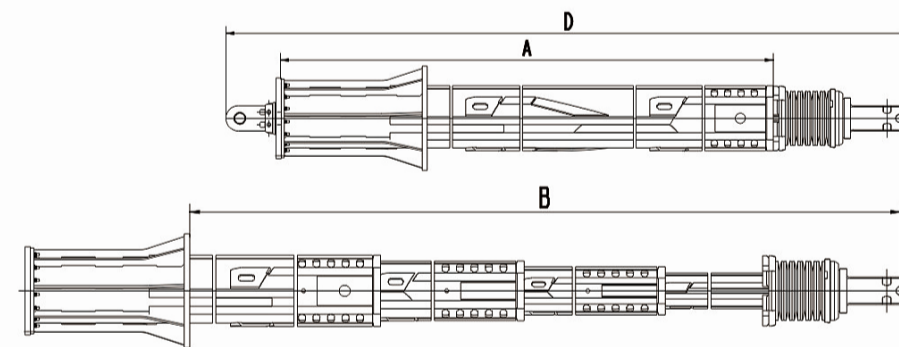
T The effective drilling depth

W The height of drilling bucket

T=B+W-H Drilling depth of kelly bar



Dimensions

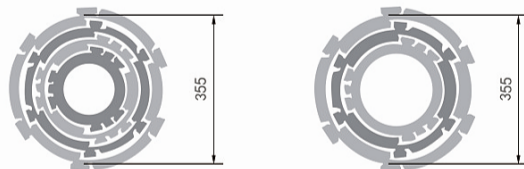


A The first section length

B The extended length

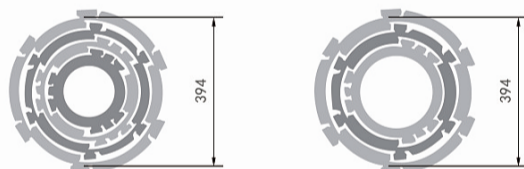
D The transport length

355 series Kelly Bar Dimensions



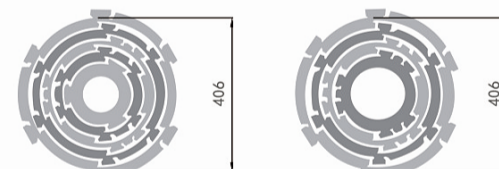
Model	Drilling Depth	A	B	D	Total Weight
	M	MM	MM	MM	T
4 sections Friction $\phi 355-4 \times 10m$	36	10000	37460	11325	4.25
4 sections Friction $\phi 355-4 \times 12m$	44	12000	45460	13325	5.06
4 sections Interlocking $\phi 355-4 \times 10m$	34	10000	36160	11325	4.83
4 sections Interlocking $\phi 355-4 \times 12m$	42	12000	44160	13325	5.75

394 series Kelly Bar Dimensions



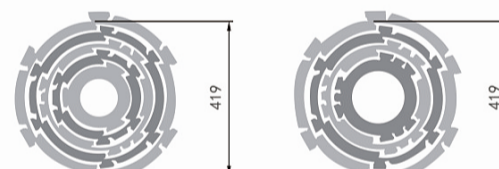
Model	Drilling Depth	A	B	D	Total Weight
	M	MM	MM	MM	T
3 sections Interlocking $\phi 394-3 \times 13m$	33	13190	36200	14640	8.50
3 sections Interlocking $\phi 394-3 \times 15m$	39	15190	42200	16640	9.80
4 sections Interlocking $\phi 394-4 \times 13m$	44	13190	47000	14640	9.97
4 sections Interlocking $\phi 394-4 \times 15m$	52	15190	55000	16640	11.50

406 series Kelly Bar Dimensions



Model	Drilling Depth	A	B	D	Total Weight
	M	MM	MM	MM	T
5 sections Friction $\phi 406-5 \times 13m$	58	13075	60800	14570	8.02
5 sections Friction $\phi 406-5 \times 15m$	68	15075	70800	16570	9.27
4 sections Interlocking $\phi 406-4 \times 13m$	44	13190	46700	14640	8.24
4 sections Interlocking $\phi 406-4 \times 15m$	52	15190	54700	16640	9.50

419 series Kelly Bar Dimensions



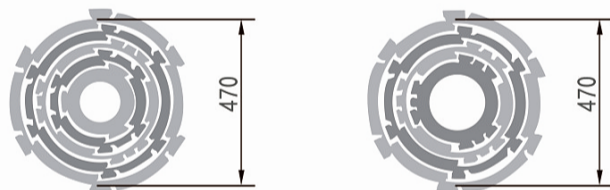
Model	Drilling Depth	A	B	D	Total Weight
	M	MM	MM	MM	T
5 sections Friction $\phi 419-5 \times 13m$	58	13075	60800	14570	8.98
5 sections Friction $\phi 419-5 \times 15m$	68	15075	70800	16570	10.17
4 sections Interlocking $\phi 419-4 \times 13m$	44	13190	46700	14640	9.15
4 sections Interlocking $\phi 419-4 \times 15m$	52	15190	54700	16640	10.35
3 sections Interlocking $\phi 419-3 \times 13m$	36	13190	38700	14640	9.31
3 sections Interlocking $\phi 419-3 \times 15m$	39	15190	41700	16640	10.62

445 series Kelly Bar Dimensions



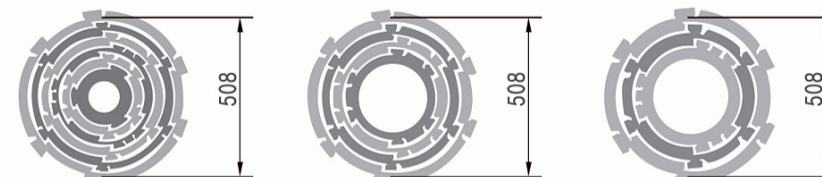
Model	Drilling Depth	A	B	D	Total Weight
	M	MM	MM	MM	T
5 sections Friction $\phi 445-5 \times 13M$	58	13075	60800	14570	9.79
5 sections Friction $\phi 445-5 \times 15M$	68	15075	70800	16570	11.30
4 sections Interlocking $\phi 445-4 \times 13M$	44	13190	46700	14640	9.97
4 sections Interlocking $\phi 445-4 \times 15M$	52	15190	54700	16640	11.50
3 sections Interlocking $\phi 445-3 \times 13M$	33	13190	36300	14640	9.20
3 sections Interlocking $\phi 445-3 \times 15M$	39	15190	42300	16640	10.62

470 series Kelly Bar Dimensions



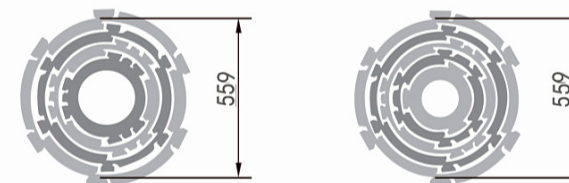
Model	Drilling Depth	A	B	D	Total Weight
	M	MM	MM	MM	T
5 sections Friction $\phi 470-5 \times 13M$	58	13075	60800	14570	11.05
5 sections Friction $\phi 470-5 \times 15M$	68	15075	70800	16570	12.75
4 sections Interlocking $\phi 470-4 \times 13M$	44	13190	46700	14640	10.53
4 sections Interlocking $\phi 470-4 \times 15M$	52	15190	54700	16640	12.15
3 sections Interlocking $\phi 470-3 \times 13M$	33	13190	35700	14640	10.62
3 sections Interlocking $\phi 470-3 \times 15M$	39	15190	41700	16640	12.33

508 series Kelly Bar Dimensions



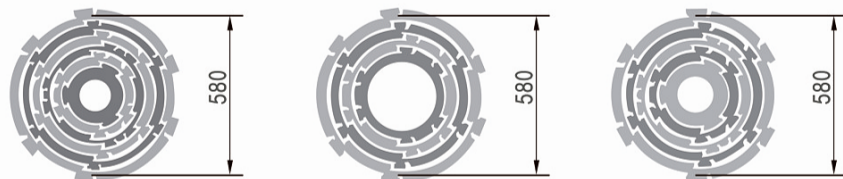
Model	Drilling Depth	A	B	D	Total Weight
	M	MM	MM	MM	T
6 sections Friction $\phi 508-6 \times 13M$	68	13075	60800	14580	12.70
6 sections Friction $\phi 508-6 \times 15M$	81	15075	70800	16580	14.65
5 sections Interlocking $\phi 508-5 \times 13M$	57	13075	59800	14580	12.55
5 sections Interlocking $\phi 508-5 \times 15M$	68	15075	70800	16580	13.84
4 sections Interlocking $\phi 508-4 \times 13M$	44	13190	46700	14670	10.80
4 sections Interlocking $\phi 508-4 \times 15M$	52	15190	54700	16670	12.50
3 sections Interlocking $\phi 508-3 \times 13M$	33	13190	36300	14640	11.65
3 sections Interlocking $\phi 508-3 \times 15M$	39	15190	42300	16640	13.44

559 series Kelly Bar Dimensions



Model	Drilling Depth	A	B	D	Total Weight
	M	MM	MM	MM	T
5 sections Friction $\phi 559-5 \times 13M$	72	16050	88000	17750	15.30
5 sections Friction $\phi 559-5 \times 15M$	82	18050	98000	19750	17.21
4 sections Interlocking $\phi 559-4 \times 13M$	56	16050	57500	17750	13.50
4 sections Interlocking $\phi 559-4 \times 15M$	64	18050	65500	19750	15.20

580 series Kelly Bar Dimensions



Model	Drilling Depth	A MM	B MM	D MM	Total Weight T
	M				
6 sections Friction ϕ 580-6x18m	99	18050	98000	19750	20.54
6 sections Friction ϕ 580-6x20m	110	20050	110000	21750	22.82
4 sections Interlocking ϕ 580-4x18m	64	18050	65500	19750	19.01
4 sections Interlocking ϕ 580-4x20m	72	20050	73500	21750	21.13
5 sections Interlocking ϕ 580-5x18m	82	18050	81500	19750	21.83
5 sections Interlocking ϕ 580-5x20m	92	20050	91500	21750	24.25

630 series Kelly Bar Dimensions



Model	Drilling Depth	A MM	B MM	D MM	Total Weight T
	M				
6 sections Friction ϕ 630-6x20m	110	20050	113300	21700	25.89
6 sections Friction ϕ 630-6x24m	130	24050	137300	25700	31.07
4 sections Interlocking ϕ 630-4x20m	70	20050	75000	21700	24.73
4 sections Interlocking ϕ 630-4x24m	86	24050	91000	25700	29.67
5 sections Interlocking ϕ 630-5x20m	88	20050	91500	21700	27.73
5 sections Interlocking ϕ 630-5x24m	108	24050	111500	25700	33.27



Dimensions	559-5x23m/ Interlocking
Max Drilling Depth	107.5m
Drilling Diameter	2800mm
Customer from	Malaysia
Drilling Rig	Bauer BG46



Dimensions	470-4x17m/Interlocking
Max Drilling Depth	63m
Customer from	Malaysia
Drilling Rig	Bauer BG38



Dimensions	394-4×17m/ Interlocking
Max Drilling Depth	60m
Customer from	China
Drilling Rig	Bauer BG26



Dimensions	470-4×13m/ Interlocking
Max Drilling Depth	46m
Drilling Diameter	1180mm
Customer from	Australia
Drilling Rig	Liebherr LB36



Dimensions	559-5×27m/ Interlocking
Max Drilling Depth	125m
Customer from	China
Drilling Rig	Bauer BG46



Dimensions	559-5×23m/ Interlocking
Max Drilling Depth	107.5m
Drilling Diameter	2500mm
Customer from	Malaysia
Drilling Rig	Liebherr LB44





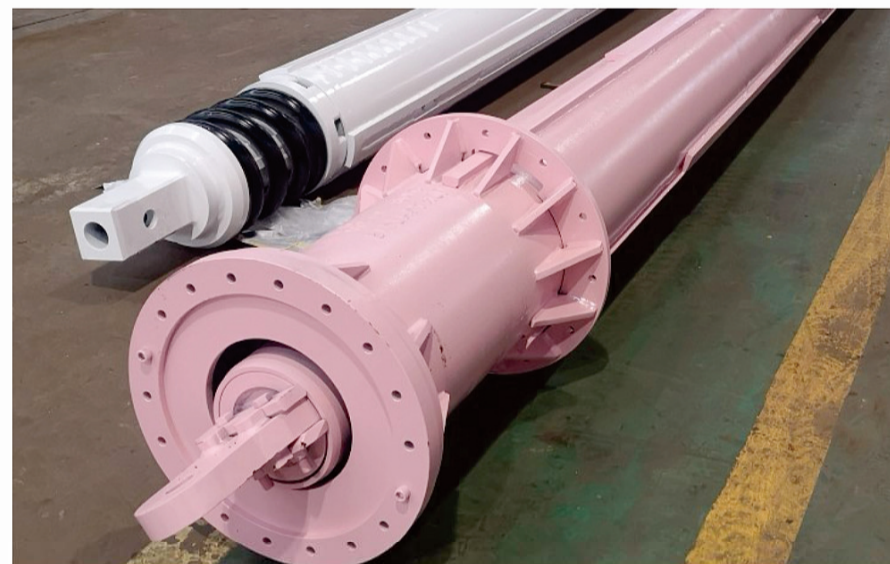
Dimensions	355-4×11/Interlocking
Max Drilling Depth	38m
Customer from	Mexico
Drilling Rig	Soilmec R312/200



Dimensions	445-4×13/Interlocking
Max Drilling Depth	46m
Customer from	Thailand
Drilling Rig	Mait HR260



Dimensions	406-4×10.5m/ Interlocking
Max Drilling Depth	36m
Drilling Diameter	680mm
Customer from	Ethiopia
Drilling Rig	Soilmec SR60





Dimensions	630-5×22m/ Interlocking
Max Drilling Depth	102m
Customer from	China
Drilling Rig	SANY SR485



Dimensions	630-5×24m/ Interlocking
Max Drilling Depth	112.5m
Drilling Diameter	3000mm
Customer from	China
Drilling Rig	XCMG XR550

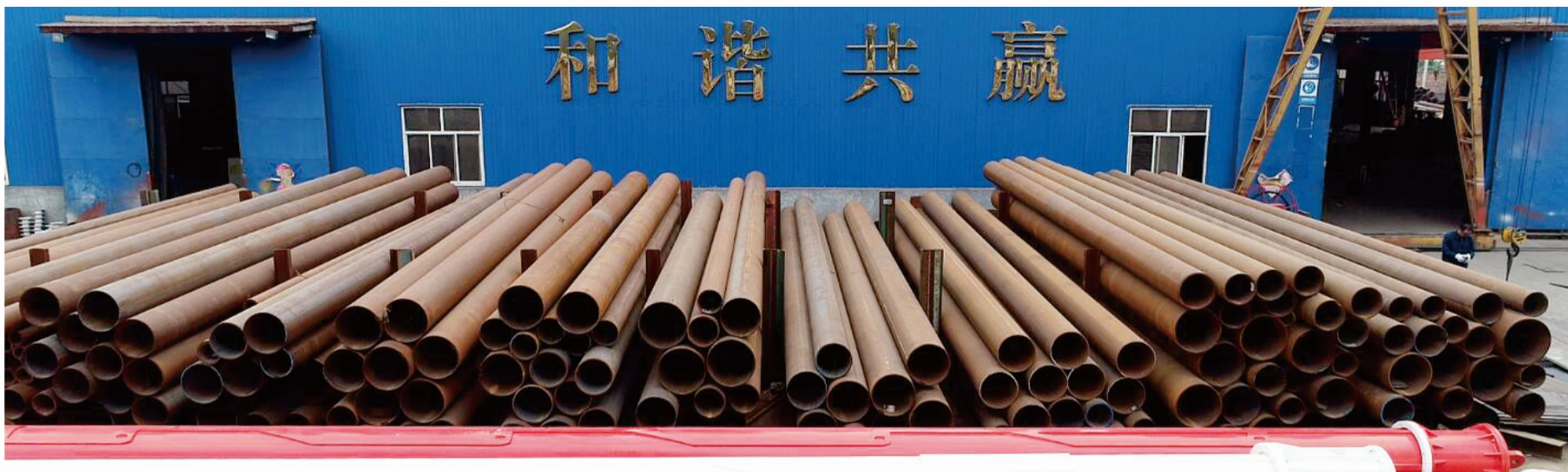


Dimensions	580-5×19.5m/ Interlocking
Max Drilling Depth	90m
Customer from	China
Drilling Rig	XCMG XR400



Dimensions	530-4×18m/ Interlocking
Max Drilling Depth	66m
Customer from	China
Drilling Rig	Sunward SWDM520





Project case



Shenzhong Link in China, 2019

Site service



Site Service in Singapore, 2019

Technical support



Kelly bar assemble guide in Egypt, 2020

Accessories



In addition to kelly bars, Unidrill also supplies kelly bar accessories, including terminal joint, swivel head, upper sections, kelly stub welded parts, damping springs, rings, pallets, etc. Unidrill can arrange for professional R&D personnel to conduct onsite measurements, to ensure that the kelly bar accessories ordered by customers match their original kelly bar.

DRILLMASTER

Headquarters

Drillmaster Engineering Technology Co.,Ltd

More than a drilling tools supplier, Drillmaster is a leading solution provider for foundation engineering. With decades of years' experience in the R&D, fabrication and sales of piling equipments: pile breaker, casing rotator, oscillator, drill bits, etc, Drillmaster has established a complete factory production system. Unimate, Unidrill and Fountech are subsidiaries of Drillmaster, respectively responsible for the R&D and production of different foundation engineering products.



Unimate Heavy Industry Co.,Ltd

With factory in Wuhan, China, more than 10 years of production experience, specializes in the production of drilling tools, casings and drilling accessories as well as the rent of drill rig and sales of used drill rig.



Unidrill Technology Co.,Ltd

Factories are located in Hebei and Wuhan, mainly responsible for the production of Kelly Bars, Drilling Tools and Desanders, well known by its strict quality control.



Hunan imachine Technology Co., Ltd

A technology and service oriented company focusing on the recycling, maintenance and export of used construction machinery.